



General purpose, also suitable for stainless steel

# S-TAP

Volume 3



NEW SIZES AVAILABLE NOW • NEW SIZES AVAILABLE NOW • NEW SIZES AVAILABLE NOW • NEW SIZES AVAILABLE NOW • NEW SIZES AVAILABLE NOW

Additional  
**SIZES**

M	MF	FORM E
G	+0.1	UNC
UNF	RC	

NEW SIZES AVAILABLE NOW • NEW SIZES AVAILABLE NOW • NEW SIZES AVAILABLE NOW • NEW SIZES AVAILABLE NOW • NEW SIZES AVAILABLE NOW



# INDEX

---

## Blind Hole

### Metric

S-SFT	<b>NEW SIZES</b> .....	PAGE 5
S-SFT 6G	<b>NEW</b> .....	PAGE 6
S-SFT 7G	<b>NEW</b> .....	PAGE 7
S-SFT +0.1	<b>NEW</b> .....	PAGE 8
S-SFT (FORM E)	<b>NEW</b> .....	PAGE 9
S-LT-SFT	<b>NEW</b> .....	PAGE 10
S-SFT-LH	<b>NEW</b> .....	PAGE 11
S-SFT-HB Weldon Shank	<b>NEW</b> .....	PAGE 12

### Metric Fine

S-SFT	.....	PAGE 13
S-SFT 6G	<b>NEW</b> .....	PAGE 14

### G (BSP)

S-SFT	<b>NEW</b> .....	PAGE 15
-------	------------------	---------

### UNC

S-SFT	<b>NEW</b> .....	PAGE 16
-------	------------------	---------

### UNF

S-SFT	<b>NEW</b> (available from December 2017) .....	PAGE 17
-------	---	---------

### BSW

S-SFT	<b>NEW</b> (available from March 2018) .....	PAGE 18
-------	--	---------

### BSF

S-SFT	<b>NEW</b> (available from March 2018) .....	PAGE 19
-------	--	---------

### BA

S-SFT	<b>NEW</b> (available from March 2018) .....	PAGE 20
-------	--	---------

### Rc (BSPT)

S-TPT	<b>NEW</b> (available from December 2017) .....	PAGE 21
-------	---	---------

# INDEX

---

## Through Hole

### Metric

S-POT	<b>NEW SIZES</b> .....	PAGE 22
S-POT 6G	<b>NEW</b> .....	PAGE 23
S-POT 7G	<b>NEW</b> .....	PAGE 24
S-POT +0.1	<b>NEW</b> .....	PAGE 25
S-LT-POT	<b>NEW</b> .....	PAGE 26
S-POT-LH	<b>NEW</b> .....	PAGE 27
S-POT-HB Weldon Shank	<b>NEW</b> .....	PAGE 28

### Metric Fine

S-POT	.....	PAGE 29
S-POT 6G	<b>NEW</b> .....	PAGE 30

### G (BSP)

S-POT	<b>NEW</b> .....	PAGE 31
-------	------------------	---------

### UNC

S-POT	<b>NEW</b> .....	PAGE 32
-------	------------------	---------

### UNF

S-POT	<b>NEW</b> (available from December 2017) .....	PAGE 33
-------	---	---------

### BSW

S-POT	<b>NEW</b> (available from March 2018) .....	PAGE 34
-------	--	---------

### BSF

S-POT	<b>NEW</b> (available from March 2018) .....	PAGE 35
-------	--	---------

### BA

S-POT	<b>NEW</b> (available from March 2018) .....	PAGE 36
-------	--	---------

# KEY FEATURES: S-TAP

---



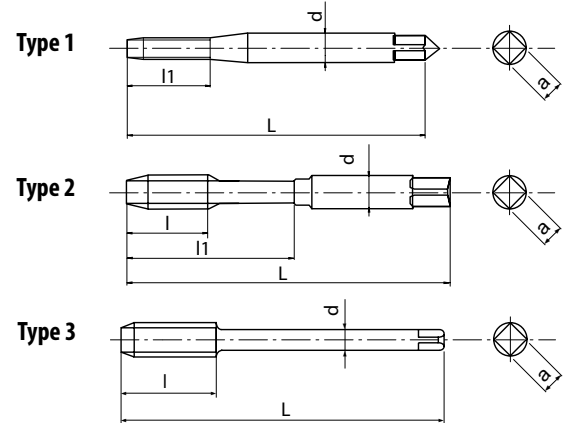
1 General purpose

2 Accelerate chip evacuation  
Variable lead flute (PAT.)

3 Also suitable for stainless steel

4 Steam oxide surface treatment

5 HSSE



- HSSE spiral-fluted cutting tap for blind holes
- Steam oxide treatment
- General purpose tapping in steels and stainless steels

<b>P</b> C < 0,2%	<b>P</b> 0,25 < C < 0,4	<b>P</b> C > 0,45%	<b>P</b> SCM	<b>M</b> INOX	<b>K</b> GGG	
10-15	8-14	8-14	7-11	7-12	7-14	m/min

<b>M</b>	<b>HSSE</b>	<b>OX</b>	<b>40°</b>	<b>ISO 2 6H</b>	<b>ISO 1 5H&lt;sub&gt;M1,4&lt;/sub&gt;</b>	<b>C/2,5</b>	<b>DIN 371</b>	<b>DIN 376</b>
----------	-------------	-----------	------------	-----------------	--	--------------	----------------	----------------

EDP\*: Tolerance 5H

EDP	M	P	L	l	l1	d	a	z	Type	DIN
48223111*	1	0,25	40	-	5	2,5	2,1	2	1	DIN371
48223112*	1,1	0,25	40	-	5	2,5	2,1	2	1	DIN371
48223113*	1,2	0,25	40	-	5	2,5	2,1	2	1	DIN371
48223115*	1,4	0,3	40	-	6	2,5	2,1	2	1	DIN371
48223118	1,6	0,35	40	-	7	2,5	2,1	2	1	DIN371
48223119	1,7	0,35	40	-	8	2,5	2,1	2	1	DIN371
48223120	1,8	0,35	40	-	8	2,5	2,1	2	1	DIN371
48223125	2	0,4	45	4	10	2,8	2,1	2	2	DIN371
48223127	2,2	0,45	45	5	11	2,8	2,1	2	2	DIN371
48223128	2,3	0,4	45	4	12	2,8	2,1	2	2	DIN371
48223133	2,5	0,45	50	4,5	13	2,8	2,1	2	2	DIN371
48223136	2,6	0,45	50	4,5	13	2,8	2,1	2	2	DIN371
48223138	3	0,5	56	5	18	3,5	2,7	3	2	DIN371
48223142	3,5	0,6	56	6	20	4	3	3	2	DIN371
48223144	4	0,7	63	7	21	4,5	3,4	3	2	DIN371
48223147	4,5	0,75	70	7,5	25	6	4,9	3	2	DIN371
48223149	5	0,8	70	8	25	6	4,9	3	2	DIN371
48223152	5,5	0,9	80	9	30	6	4,9	3	2	DIN371
48223155	6	1	80	10	30	6	4,9	3	2	DIN371
48223158	7	1	80	10	30	7	5,5	3	2	DIN371
48223161	8	1,25	90	13	35	8	6,2	3	2	DIN371
48223165	9	1,25	90	13	35	9	7	3	2	DIN371
48223169	10	1,5	100	15	39	10	8	3	2	DIN371
48223140	3	0,5	56	5	-	2,2	-	3	3	DIN376
48223185	4	0,7	63	7	-	2,8	2,1	3	3	DIN376
48223150	5	0,8	70	8	-	3,5	2,7	3	3	DIN376
48223187	6	1	80	10	-	4,5	3,4	3	3	DIN376
48223159	7	1	80	10	-	5,5	4,3	3	3	DIN376
48223188	8	1,25	90	13	-	6	4,9	3	3	DIN376
48223166	9	1,25	90	13	-	7	5,5	3	3	DIN376
48223189	10	1,5	100	15	-	7	5,5	3	3	DIN376
48223175	11	1,5	100	15	-	8	6,2	3	3	DIN376
48223179	12	1,75	110	18	-	9	7	4	3	DIN376
48223191	14	2	110	20	-	11	9	4	3	DIN376
48223202	16	2	110	20	-	12	9	4	3	DIN376
48223214	18	2,5	125	25	-	14	11	4	3	DIN376
48223228	20	2,5	140	25	-	16	12	4	3	DIN376
48223238	22	2,5	140	25	-	18	14,5	4	3	DIN376
48223247	24	3	160	30	-	18	14,5	4	3	DIN376











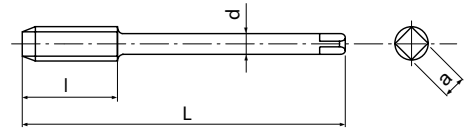






# S-SFT

Threading | Cutting taps | Metric Fine



- HSS-E spiral-fluted cutting tap for blind holes
- Steam oxide treatment
- General purpose tapping in steels and stainless steels

<b>P</b>	<b>P</b>	<b>P</b>	<b>P</b>	<b>M</b>	<b>K</b>	
C < 0,2%	0,25 < C < 0,4	C > 0,45%	SCM	INOX	GGG	
10-15	8-14	8-14	7-11	7-12	7-14	m/min

<b>MF</b>	<b>HSSE</b>	<b>OX</b>	<b>40°</b>	<b>ISO 2 6H</b>	<b>C/2,5</b>		<b>DIN 374</b>
-----------	-------------	-----------	------------	-----------------	--------------	--	----------------

EDP	MF	P	L	l	d	a	z	DIN
48223139	3	0,35	56	4	2,2	-	3	DIN374
48223145	4	0,5	63	5,6	2,8	2,1	3	DIN374
48223151	5	0,5	70	6,4	3,5	2,7	3	DIN374
48223157	6	0,5	80	8	4,5	3,4	3	DIN374
48223156	6	0,75	80	8	4,5	3,4	3	DIN374
48223163	8	0,75	80	10	6	4,9	3	DIN374
48223162	8	1	90	10	6	4,9	3	DIN374
48223167	9	1	90	10	7	5,5	3	DIN374
48223172	10	0,75	90	12	7	5,5	3	DIN374
48223171	10	1	90	12	7	5,5	3	DIN374
48223170	10	1,25	100	12	7	5,5	3	DIN374
48223176	11	1	90	12	8	6,2	3	DIN374
48223182	12	1	100	14	9	7	4	DIN374
48223181	12	1,25	100	14	9	7	4	DIN374
48223180	12	1,5	100	14	9	7	4	DIN374
48223194	14	1	100	16	11	9	4	DIN374
48223193	14	1,25	100	16	11	9	4	DIN374
48223192	14	1,5	100	16	11	9	4	DIN374
48223204	16	1	100	16	12	9	4	DIN374
48223203	16	1,5	100	16	12	9	4	DIN374
48223218	18	1	110	20	14	11	4	DIN374
48223216	18	1,5	110	20	14	11	4	DIN374
48223232	20	1	125	20	16	12	4	DIN374
48223230	20	1,5	125	20	16	12	4	DIN374
48223220	20	2	140	20	16	12	4	DIN374
48223241	22	1	125	20	18	14,5	4	DIN374
48223240	22	1,5	125	20	18	14,5	4	DIN374
48223239	22	2	140	20	18	14,5	4	DIN374
48223251	24	1	140	20	18	14,5	4	DIN374
48223250	24	1,5	140	24	18	14,5	4	DIN374
48223249	24	2	140	24	18	14,5	4	DIN374

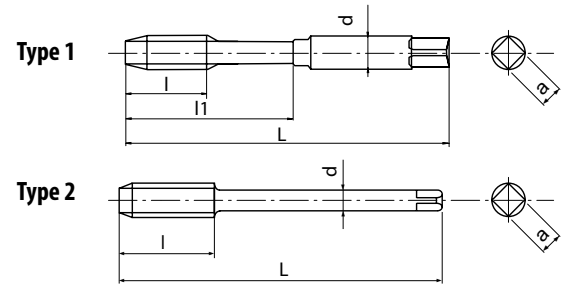












- HSE spiral-fluted cutting tap for blind holes
- Steam oxide treatment
- General purpose tapping in steels and stainless steels

<b>P</b> C < 0,2%	<b>P</b> 0,25 < C < 0,4	<b>P</b> C > 0,45%	<b>P</b> SCM	<b>M</b> INOX	<b>K</b> GGG	
10-15	8-14	8-14	7-11	7-12	7-14	m/min

UNF	HSSE	OX	40°	ANSI 2B	C/2,5	DIN 2184-1	DIN 2184-1
-----	------	----	-----	---------	-------	------------	------------

EDP	UNF	P	L	l	l1	d	a	z	Type	DIN
48223454	2	64	45	3,6	11	2,8	2,1	2	1	DIN2184-1
48223456	3	56	50	3,6	13	2,8	2,1	2	1	DIN2184-1
48223458	4	48	56	5,1	18	3,5	2,7	2	1	DIN2184-1
48223460	5	44	56	5,1	18	3,5	2,7	2	1	DIN2184-1
48223462	6	40	56	6,4	20	4	3	2	1	DIN2184-1
48223465	8	36	63	6,4	21	4,5	3,4	2	1	DIN2184-1
48223467	10	32	70	8,5	25	6	4,9	2	1	DIN2184-1
48223469	12	28	80	8,5	30	6	4,9	2	1	DIN2184-1
48223472	1/4	28	80	10,2	30	7	5,5	2	1	DIN2184-1
48223476	5/16	24	90	11,3	35	8	6,2	3	1	DIN2184-1
48223481	3/8	24	90	12,7	35	10	8	3	1	DIN2184-1
48223486	7/16	20	100	14,5	-	8	6,2	3	2	DIN2184-1
48223491	1/2	20	100	15,6	-	9	7	3	2	DIN2184-1
48223496	9/16	18	100	16,9	-	11	9	3	2	DIN2184-1
48223504	5/8	18	100	18,5	-	12	9	3	2	DIN2184-1
48223517	3/4	16	110	25,4	-	14	11	4	2	DIN2184-1
48223528	7/8	14	125	28,2	-	18	14,5	4	2	DIN2184-1
48223539	1	12	140	31,8	-	18	14,5	4	2	DIN2184-1







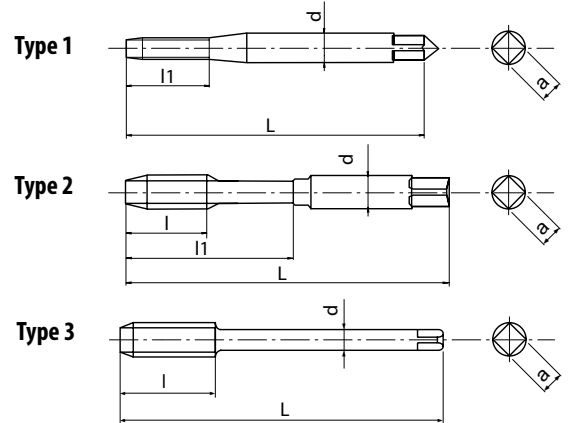




# S-POT NEW SIZES

M1, M1,1 & M1,2  
available from February 2018

Threading | Cutting taps | Metric



- HSSE spiral-point cutting tap for through holes
- Steam oxide treatment
- General purpose tapping in steels and stainless steels

<b>P</b> C < 0,2%	<b>P</b> 0,25 < C < 0,4	<b>P</b> C > 0,45%	<b>P</b> SCM	<b>M</b> INOX	<b>K</b> GGG	
15-24	10-15	10-15	8-13	8-16	10-15	m/min

<b>M</b>	<b>HSSE</b>	<b>OX</b>	<b>ISO 2 6H</b>	<b>ISO 1 5H-M 1,4</b>	<b>B/4</b>	<b>DIN 371</b>	<b>DIN 376</b>
----------	-------------	-----------	-----------------	-----------------------	------------	----------------	----------------

EDP\* : Tolerance 5H

Threading | Cutting taps

Metric

EDP	M	P	L	l	l1	d	a	z	Type	DIN
48224111* <small>NEW</small>	1	0,25	40	-	5	2,5	2,1	2	1	DIN371
48224112* <small>NEW</small>	1,1	0,25	40	-	5	2,5	2,1	2	1	DIN371
48224113* <small>NEW</small>	1,2	0,25	40	-	5	2,5	2,1	2	1	DIN371
48224115* <small>NEW</small>	1,4	0,3	40	-	7	2,5	2,1	2	1	DIN371
48224118 <small>NEW</small>	1,6	0,35	40	-	8	2,5	2,1	2	1	DIN371
48224119 <small>NEW</small>	1,7	0,35	40	-	8	2,5	2,1	2	1	DIN371
48224120 <small>NEW</small>	1,8	0,35	40	-	8	2,5	2,1	2	1	DIN371
48224125 <small>NEW</small>	2	0,4	45	-	8	2,8	2,1	2	1	DIN371
48224127 <small>NEW</small>	2,2	0,45	45	-	9	2,8	2,1	2	1	DIN371
48224128 <small>NEW</small>	2,3	0,4	45	-	9	2,8	2,1	2	1	DIN371
48224133 <small>NEW</small>	2,5	0,45	50	-	9	2,8	2,1	2	1	DIN371
48224136 <small>NEW</small>	2,6	0,45	50	-	9	2,8	2,1	2	1	DIN371
48224138 <small>NEW</small>	3	0,5	56	11	18	3,5	2,7	3	2	DIN371
48224142 <small>NEW</small>	3,5	0,6	56	12	20	4	3	3	2	DIN371
48224144 <small>NEW</small>	4	0,7	63	13	21	4,5	3,4	3	2	DIN371
48224147 <small>NEW</small>	4,5	0,75	70	16	25	6	4,9	3	2	DIN371
48224149 <small>NEW</small>	5	0,8	70	16	25	6	4,9	3	2	DIN371
48224152 <small>NEW</small>	5,5	0,9	80	17	30	6	4,9	3	2	DIN371
48224155 <small>NEW</small>	6	1	80	19	30	6	4,9	3	2	DIN371
48224158 <small>NEW</small>	7	1	80	19	30	7	5,5	3	2	DIN371
48224161 <small>NEW</small>	8	1,25	90	22	35	8	6,2	3	2	DIN371
48224165 <small>NEW</small>	9	1,25	90	22	35	9	7	3	2	DIN371
48224169 <small>NEW</small>	10	1,5	100	24	39	10	8	3	2	DIN371
48224140 <small>NEW</small>	3	0,5	56	11	-	2,2	-	3	3	DIN376
48224185 <small>NEW</small>	4	0,7	63	13	-	2,8	2,1	3	3	DIN376
48224150 <small>NEW</small>	5	0,8	70	16	-	3,5	2,7	3	3	DIN376
48224187 <small>NEW</small>	6	1	80	19	-	4,5	3,4	3	3	DIN376
48224159 <small>NEW</small>	7	1	80	19	-	5,5	4,3	3	3	DIN376
48224188 <small>NEW</small>	8	1,25	90	22	-	6	4,9	3	3	DIN376
48224166 <small>NEW</small>	9	1,25	90	22	-	7	5,5	3	3	DIN376
48224189 <small>NEW</small>	10	1,5	100	24	-	7	5,5	3	3	DIN376
48224175 <small>NEW</small>	11	1,5	100	24	-	8	6,2	3	3	DIN376
48224179 <small>NEW</small>	12	1,75	110	28	-	9	7	3	3	DIN376
48224191 <small>NEW</small>	14	2	110	30	-	11	9	3	3	DIN376
48224202 <small>NEW</small>	16	2	110	32	-	12	9	3	3	DIN376
48224214 <small>NEW</small>	18	2,5	125	34	-	14	11	3	3	DIN376
48224228 <small>NEW</small>	20	2,5	140	34	-	16	12	3	3	DIN376
48224238 <small>NEW</small>	22	2,5	140	34	-	18	14,5	3	3	DIN376
48224247 <small>NEW</small>	24	3	160	38	-	18	14,5	3	3	DIN376









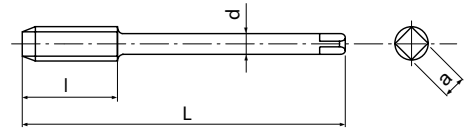






# S-POT

Threading | Cutting taps | Metric Fine



- HSS-E spiral-point cutting tap for through holes
- Steam oxide treatment
- General purpose tapping in steels and stainless steels

<b>P</b> C < 0,2%	<b>P</b> 0,25 < C < 0,4	<b>P</b> C > 0,45%	<b>P</b> SCM	<b>M</b> INOX	<b>K</b> GGG	
15-24	10-15	10-15	8-13	8-16	10-15	m/min

<b>MF</b>	<b>HSSE</b>	<b>OX</b>	<b>ISO 2 6H</b>	<b>B/4</b>	<b>DIN 374</b>
-----------	-------------	-----------	---------------------	------------	----------------

EDP	MF	P	L	l	d	a	z	DIN
48224139	3	0,35	56	9	2,2	-	3	DIN374
48224145	4	0,5	63	10	2,8	2,1	3	DIN374
48224151	5	0,5	70	12	3,5	2,7	3	DIN374
48224157	6	0,5	80	14	4,5	3,4	3	DIN374
48224156	6	0,75	80	14	4,5	3,4	3	DIN374
48224163	8	0,75	80	18	6	4,9	3	DIN374
48224162	8	1	90	22	6	4,9	3	DIN374
48224167	9	1	90	22	7	5,5	3	DIN374
48224172	10	0,75	90	20	7	5,5	3	DIN374
48224171	10	1	90	20	7	5,5	3	DIN374
48224170	10	1,25	100	24	7	5,5	3	DIN374
48224176	11	1	90	20	8	6,2	3	DIN374
48224182	12	1	100	22	9	7	3	DIN374
48224181	12	1,25	100	22	9	7	3	DIN374
48224180	12	1,5	100	22	9	7	3	DIN374
48224194	14	1	100	22	11	9	3	DIN374
48224193	14	1,25	100	22	11	9	3	DIN374
48224192	14	1,5	100	22	11	9	3	DIN374
48224204	16	1	100	22	12	9	3	DIN374
48224203	16	1,5	100	22	12	9	3	DIN374
48224218	18	1	110	25	14	11	3	DIN374
48224216	18	1,5	110	25	14	11	3	DIN374
48224232	20	1	125	25	16	12	3	DIN374
48224230	20	1,5	125	25	16	12	3	DIN374
48224220	20	2	140	34	16	12	3	DIN374
48224241	22	1	125	25	18	14,5	3	DIN374
48224240	22	1,5	125	25	18	14,5	3	DIN374
48224239	22	2	140	34	18	14,5	3	DIN374
48224251	24	1	140	28	18	14,5	3	DIN374
48224250	24	1,5	140	28	18	14,5	3	DIN374
48224249	24	2	140	28	18	14,5	3	DIN374





















[www.osgeurope.com](http://www.osgeurope.com)



## SWEDEN

Branch office of OSG SCANDINAVIA  
Abrahams Gränd 8  
295 35 Bromölla  
Sweden  
Tel: +46 40 41 22 55  
Fax: +46 40 41 32 55  
osg@osg-scandinavia.com

## OSG SCANDINAVIA

(For Scandinavian countries)  
Langebjergvaenget 16  
4000 Roskilde  
Denmark  
Tel.: +45 46 75 65 55  
Fax: +45 46 75 67 00  
osg@osg-scandinavia.com

## OSG NETHERLANDS

Bedrijfsweg 5 - 3481 MG Harmelen  
Postbus 50 - 3480 DB Harmelen  
The Netherlands  
Tel.: +31 348 44 2764  
Fax: +31 348 44 2144  
info@osg-nl.com

## OSG UK

Shelton house, 5 Bentalls  
Pipps Hill Ind Est, Basildon Essex SS14 3BY  
United Kingdom  
Tel.: +44 845 305 1066  
Fax: +44 845 305 1067  
sales@osg-uk.com

## OSG EUROPE LOGISTICS

Avenue Lavoisier 1  
B-1300 Z.I. Wavre - Nord  
Belgium  
Tel.: +32 10 23 05 07  
Fax: +32 10 23 05 11  
info@osgeurope.com

## OSG BELUX

Avenue Lavoisier 1  
B-1300 Z.I. Wavre - Nord  
Belgium  
Tel.: +32 10 23 05 11  
Fax: +32 10 23 05 31  
info@osg-belgium.com

## OSG IBÉRICA

Bekolarra 4  
E - 01010 Vitoria-Gasteiz  
Spain  
Tel.: +34 945 242 400  
Fax: +34 945 228 883  
osg.iberica@osg-ib.com

## OSG FRANCE

Parc Icade, Paris Nord 2  
Immeuble "Le Rimbaud"  
22 Avenue des Nations  
CS66191 - 93420 Villepinte  
France  
Tel.: +33 1 49 90 10 10  
Fax: +33 1 49 90 10 15  
sales@osg-france.com





#### SLOVAKIA

Branch office of OSG Belgium s.a.  
Tel: +32 10 23 05 04  
Fax: +32 10 23 05 31  
info@osg-belgium.com

#### OSG POLAND

59 Złota St  
00-120 Warsaw  
Poland

#### OSG RUSSIA

Butlerova street, 17B, office 5069  
117342 Moscow  
Russia  
Tel: +7 (495) 150 41 54  
info@osg-russia.com

#### ROMSAN INTERNATIONAL CO. SRL

Reprezentant Exclusiv OSG  
23-25, Nerva Traian Street  
031044 Bucuresti  
România  
Tel: +40 021 322 07 47  
Fax: +40 021 321 56 00  
romsan.int@romsan.ro

#### OSG TURKEY

Rami Kışla Cad.No:56 Eyüp  
Istanbul 34056  
Turkey  
Tel:+90 212 565 24 00  
Fax: +90 212 565 44 00  
info@osg-turkey.com

#### OSG ITALIA

Via Cirenaica n. 52 int. 61/63  
I - 10142 Torino  
Italy  
Tel.: +39 0117705211  
Fax: +39 0117071402  
info@osg-italia.it

#### OSG GERMANY

Karl-Ehmann-Str. 25  
D - 73037 Göppingen  
Germany  
Tel.: +49 7161 6064 - 0  
Fax: +49 7161 6064 - 444  
info@osg-germany.de



shaping your dreams

#### **OSG EUROPE LOGISTICS**

Avenue Lavoisier 1  
B-1300 Z.I. Wavre - Nord - Belgium  
Tel: +32 10 23 05 07  
Fax: +32 10 23 05 51  
info@osgeurope.com

#### **OSG BELUX**

Avenue Lavoisier 1  
B-1300 Z.I. Wavre - Nord - Belgium  
Tel: +32 10 23 05 11  
Fax: +32 10 23 05 31  
info@osg-belgium.com

#### **OSG FRANCE**

Parc Icade, Paris Nord 2  
Immeuble "Le Rimbaud"  
22 Avenue des Nations  
CS66191 - 93420 Villepinte - France  
Tel: +33 1 49 90 10 10  
Fax: +33 1 49 90 10 15  
sales@osg-france.com

#### **OSG NETHERLANDS**

Bedrijfsweg 5 - 3481 MG Harmelen  
Tel: +31 348 44 2764  
Fax: +31 348 44 2144  
info@osg-nl.com

#### **OSG UK**

Shelton house, 5 Bentalls  
Pipps Hill Ind Est, Basildon Essex SS14 3BY  
Tel: +44 845 305 1066  
Fax: +44 845 305 1067  
sales@osg-uk.com

#### **SLOVAKIA**

Branch office of OSG Europe Logistics s.a.  
Tel (SK) +421 2 4329 1295  
Tel (BE) +32 10 23 05 07  
Fax (BE) +32 10 23 05 51  
sales-osgsvk@osgeurope.com

#### **OSG POLAND**

ul. Spółdzielcza 57  
05-074 Halinów - Poland  
Tel: +22 760 82 71  
Fax: +22 760 82 71  
osg@osg-poland.com

#### **OSG GERMANY**

Karl-Ehmann-Str. 25  
D - 73037 Göppingen - Germany  
Tel: +49 7161 6064 - 0  
Fax: +49 7161 6064 - 444  
info@osg-germany.de

#### **OSG SCANDINAVIA**

(For Scandinavian countries)  
Langebjergvaenget 16  
4000 Roskilde - Denmark  
Tel: +45 46 75 65 55  
Fax: +45 46 75 67 00  
osg@osg-scandinavia.com

#### **SWEDEN**

Branch office of OSG SCANDINAVIA  
Abrahams Gränd 8  
295 35 Bromölla - Sweden  
Tel: +46 40 41 22 55  
Fax: +46 40 41 32 55  
osg@osg-scandinavia.com

#### **OSG IBÉRICA**

Bekolarra 4  
E - 01010 Vitoria-Gasteiz - Spain  
Tel: +34 945 242 400  
Fax: +34 945 228 883  
osg.iberica@osg-ib.com

#### **RUSSIA**

Butlerova street, 17B, office 5069  
117342 Moscow - Russia  
Tel: +7 (495) 150 41 54  
info@osg-russia.com

#### **OSG TURKEY**

Rami Kişla Cad.No:56 Eyüp  
Istanbul 34056 - Turkey  
Tel:+90 212 565 24 00  
Fax: +90 212 565 44 00  
info@osg-turkey.com

#### **ROMSAN INTERNATIONAL CO. SRL**

Reprezentant Exclusiv OSG  
23-25, Nerva Traian Street  
031044 Bucuresti - România  
Tel: +40 021 322 07 47  
Fax: +40 021 321 56 00  
romsan.int@romsan.ro

#### **AUSTRIA**

Branch office of OSG GERMANY  
Messestraße 11  
A-6850 Dornbirn  
Tel: +49 7161 6064-0  
Fax: +49 7161 6064-444  
info@osg-germany.de

#### **OSG ITALIA**

Via Cirenaiça n. 52 int. 61/63  
I - 10142 Torino - Italy  
Tel: +39 0117705211  
Fax: +39 0117071402  
info@osg-italia.it

#### **WEXO PRÄZISIONSWERKZEUGE GmbH**

Siemensstraße 13  
D-61352 Bad Homburg  
Tel: (06172) 10 62 06  
Fax: (06172) 10 62 13  
verkauf@wexo.com

#### **OSG EUROPE LOGISTICS S.A.**

10/2017 - All rights reserved. © OSG Europe 2017.

The contents of this catalogue are provided to you for viewing only. They are not intended for reproduction either in part or in whole in this or other medium. They cannot be copied, used to create derivation work or used for any reason, by means without the express, written permission of the copyright owner. If prices are stated, they are netto unit-prices and any eventual taxes) have to be added. The company is not responsible for any printing error in technical, price and/or any other data.

Tool specifications subject to change without notice.

[www.osgeurope.com](http://www.osgeurope.com)